

Wireless network instructions

Connecting to the UoA-WiFi network – Windows 7

Note: This guide is for use with Windows 7 and its in-built Wireless Zero configuration service only. Other wireless programs will likely work in a similar fashion.

Locate the wireless connection icon, located on the taskbar at the lower right corner of your screen:

Note: If this icon isn't on the taskbar, check that your wireless is turned ON.



Click the wireless connection icon, then click **UoA-WiFi**:



To connect automatically when the UoA-WiFi network is in range, tick “Connect automatically” then, click **Connect**:



When prompted for user credentials, enter your University username and Password then, click **OK**:

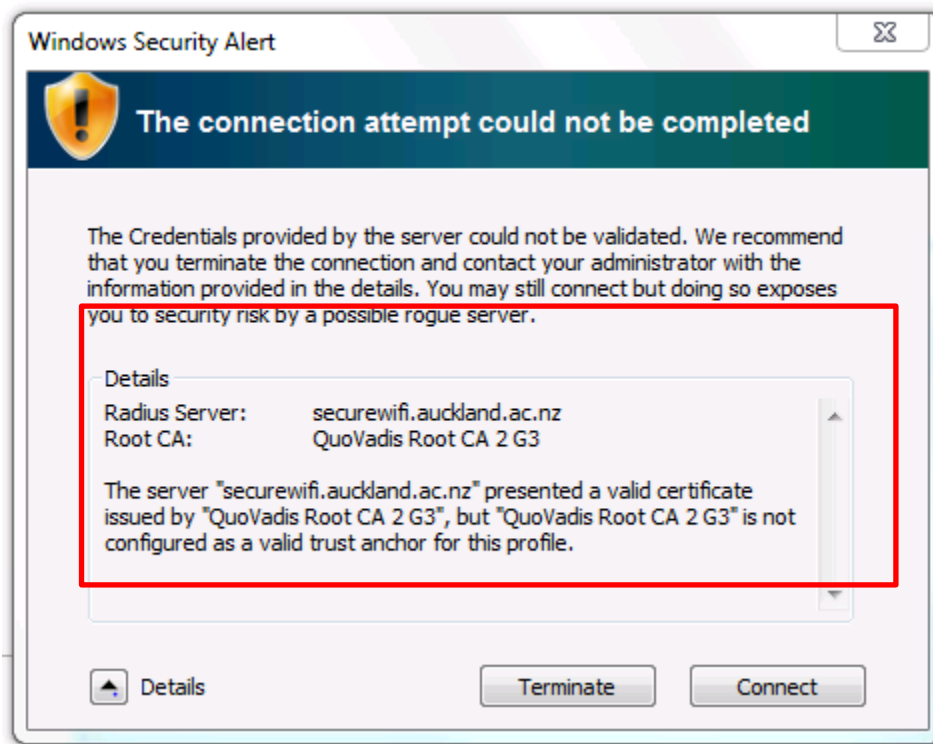


Accepting the security certificate

If you are logging in on UoA-WiFi for the first time, you will then receive a Windows security message like the one below. Click **Details**:



Carefully read the pop-up message below and confirm that the Radius Server is "securewifi.auckland.ac.nz" and that the presented server certificate "securewifi.auckland.ac.nz" is a valid certificate issued by "QuoVadis Root CA 2 G3", then click **Connect**:



Browsing the internet

Open your internet browser of choice to access both University and non-University websites.